

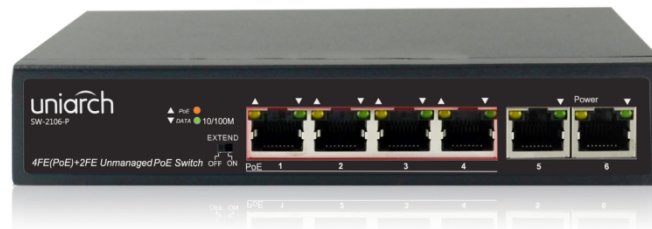
SW-2106-P

6-Port PoE Switch

Introduction

SW-2106-P provides the seamless network connection. The PoE ports (Port1~4) can automatically detect and supply power with those IEEE 802.3 af/at compliant Powered Devices (PD). The electrical power is transmitted along with data in one single cable allowing you to expand your network where there are no power lines or outlets, where you wish to fix devices such as AP, IP Cameras or IP Phones, etc.

It is easy to install and don't need to configuration. With outstanding performance and quality, the 6-port 10/100Mbps desktop PoE switch is an ideal choice for expanding your home or office network.



Key Features

- Multiple working modes to address your business needs: Default(Normal mode), EXTEND(Surveillance mode)
- Support port traffic control
- Support for secure mode, all downlink ports can communicate only with uplink ports
- Up to 250m transmission distance on surveillance mode
- Support buffer optimization
- All metal housing, safe and reliable

Specifications

Model	Description
Ports	6×100Mbps network ports (RJ45), including 4 PoE ports
Standards	IEEE802.3,IEEE802.3u,IEEE802.3az,IEEE802.3x,IEEE802.3af,IEEE802.3at
Switching capacity	1.2Gbps
Forwarding performance	0.90Mpps

Model	Description
Packet Buffer	768Kbit
MAC	2K
Dimensions (W×D×H)	160mm x 93mm x 32mm(6.3"×3.7"×1.3")
Weight	<0.6kg
Power supply	AC: 100-240V, 50/60Hz
PoE	802.3at/af
Max. PoE Power	Max capacity: 65W Max capacity for single port: 30W
Cooling Fans	0
Mean Time Between Failure(MTBF)	>50000 hours
Operating temperature	0°C-40°C (32°F-104°F)
Operating humidity	10%~90% (noncondensing)
Storage humidity	5%~90% (noncondensing)
Indicator	PWR: Steady on: AC input is normal Off: No AC input
	PoE: Off: No PoE power supply Steady on: PoE power supply is normal Flashing: PoE power supply is abnormal
	LINK/ACT: Off: No link Steady: Linked at 10/100Mbps Flashing: Transmitting data
	Speed: Off: Linked at 10/100Mbps On: Linked at 1000Mbps
Working Mode	Default(Normal mode) : All ports can communicate with each other. EXTEND(Surveillance mode): Transmission distance up to 250 meters.

Zhejiang Uniview Technologies Co.,Ltd.

Building No.10, Wanlun Science Park, Jiangling Road 88, Binjiang District, Hangzhou, Zhejiang, China

Email: overseasbusiness@uniview.com; globalsupport@uniview.com

<http://www.uniview.com>

©2018 Zhejiang Uniview Technologies Co.,Ltd. All rights reserved.

*Product specifications and availability are subject to change without notice.